

Learn how to have a safer, more accessible environment.

REMODELED BATHROOM

Frame width for pocket doors should be at least 36" to achieve a clear 32" opening. An accessible handle or a stop inside the pocket should prevent the door from sliding completely into the frame.

Pocket door with loop handle hardware is an alternative to out-swinging door that may obstruct hall or room circulation

Switches and outlets in easy-to-reach accessible locations

Lever handle faucet control

Shallow lavatory with rear drain to permit knee space clearances

Removable pipe protection and appearance panel carefully configured to provide the necessary knee space for a forward approach

Whole wall areas of plywood or other solid material reinforcing

Enlarged reinforced areas provide more secure mounting for future installation of shower seats

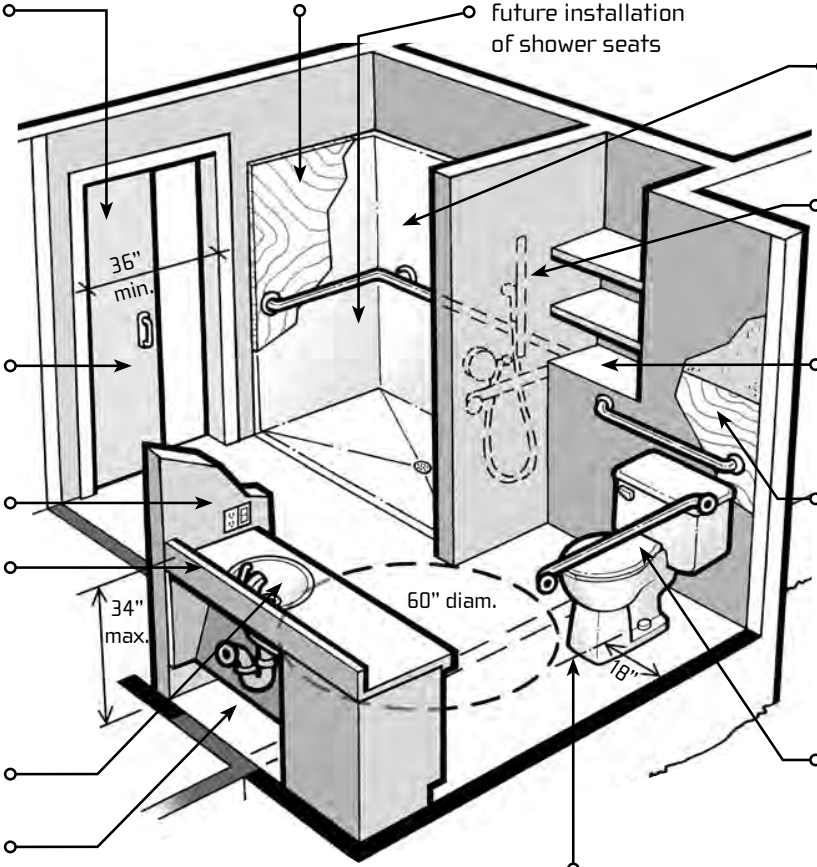
"Curbless" (roll-in) shower is a versatile fixture usable by people with differing abilities and necessary for some, 36" X 60" or larger

Hand-held shower head on adjustable height slide mount with off-set anti-scald valve and single lever handle valve

Incorporate additional "livability" features such as storage or shelving

Whole wall areas of plywood or other solid material reinforcing allow grab bar placement at the best heights and configurations to suit individual needs

Toilet seat height from 15" min. to 19" max.



Toilet placed in the corner of a 60" X 60" clear floor space is ideal, creating unobstructed areas in front and to one side—this allows greater maneuvering and transfer options for people using wheelchairs and those needing assistance



Adaptable Vanity Cabinet

To create a more conventional and marketable appearance, knee space may be concealed with retractable doors or a removable cabinet.

Recessed Floor Detail

To achieve a curbless flush shower threshold, the fixture must be recessed into the floor.





Comfort height toilet, decorative bars, additional lighting and open turning areas.



Doorless & stepless shower entry with non-slip slate floor.



Lowered, open vanity sink.



Doorless & stepless shower with non-slip tile and open turning area.